

Confetti Crag

Basics

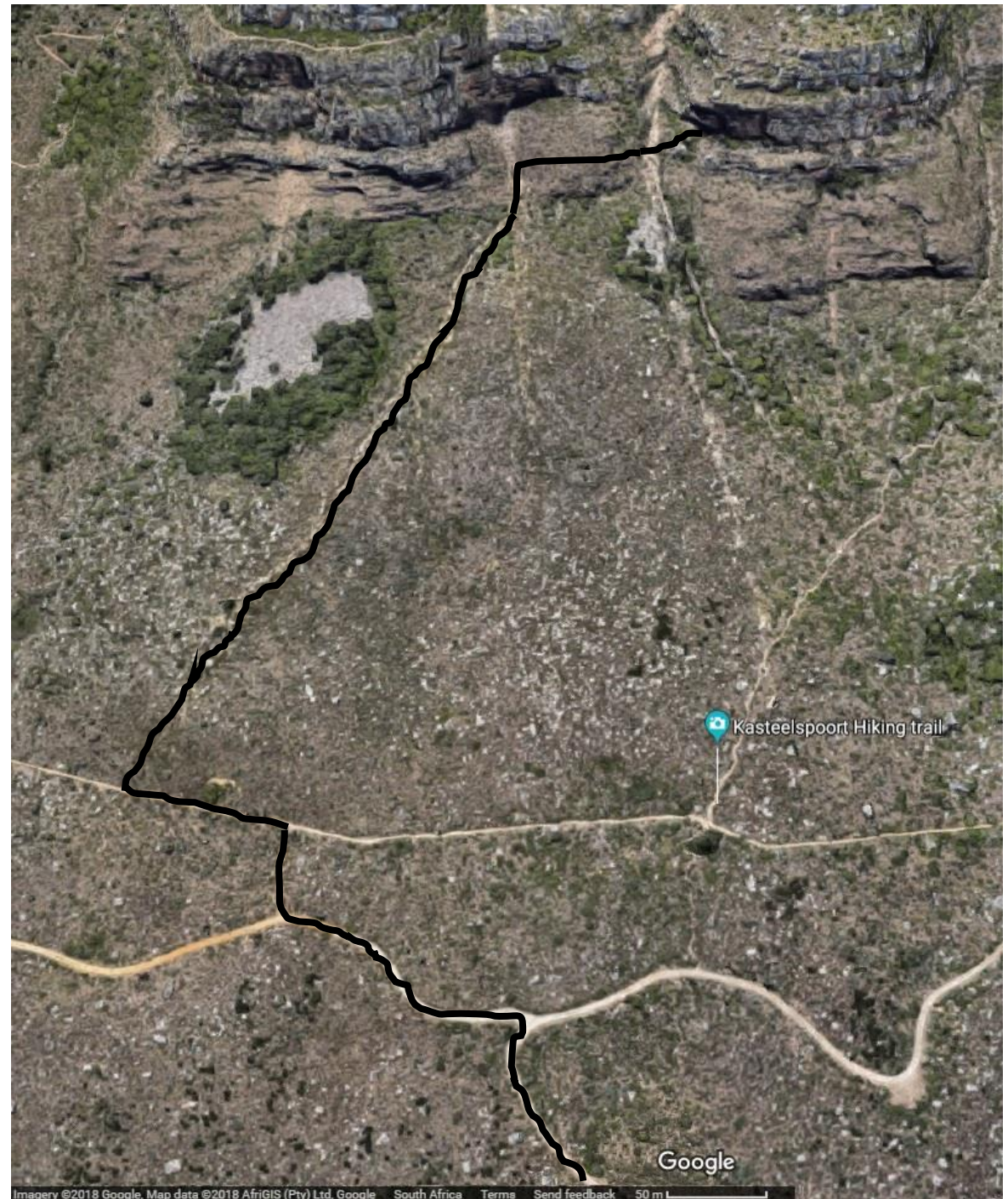
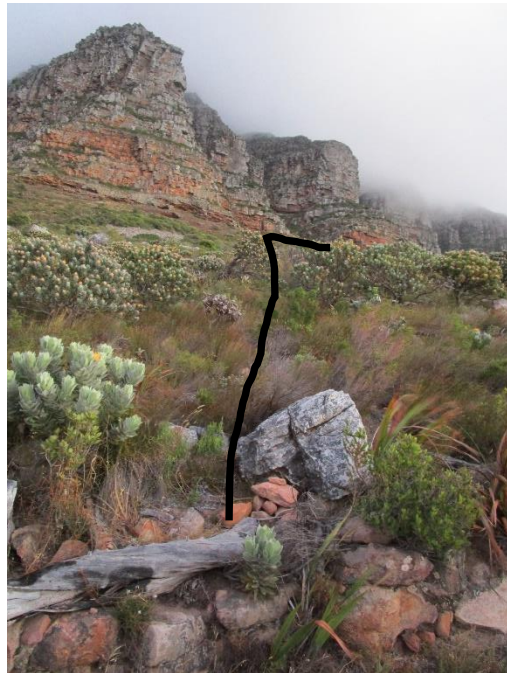
Located below Barrier buttress on the Apostles, Table Mountain. Steep, pumpy routes on great holds in the 22-24 grade range. Suggested to go in winter, early morning or a cloudy day as it can bake in the afternoon sun.

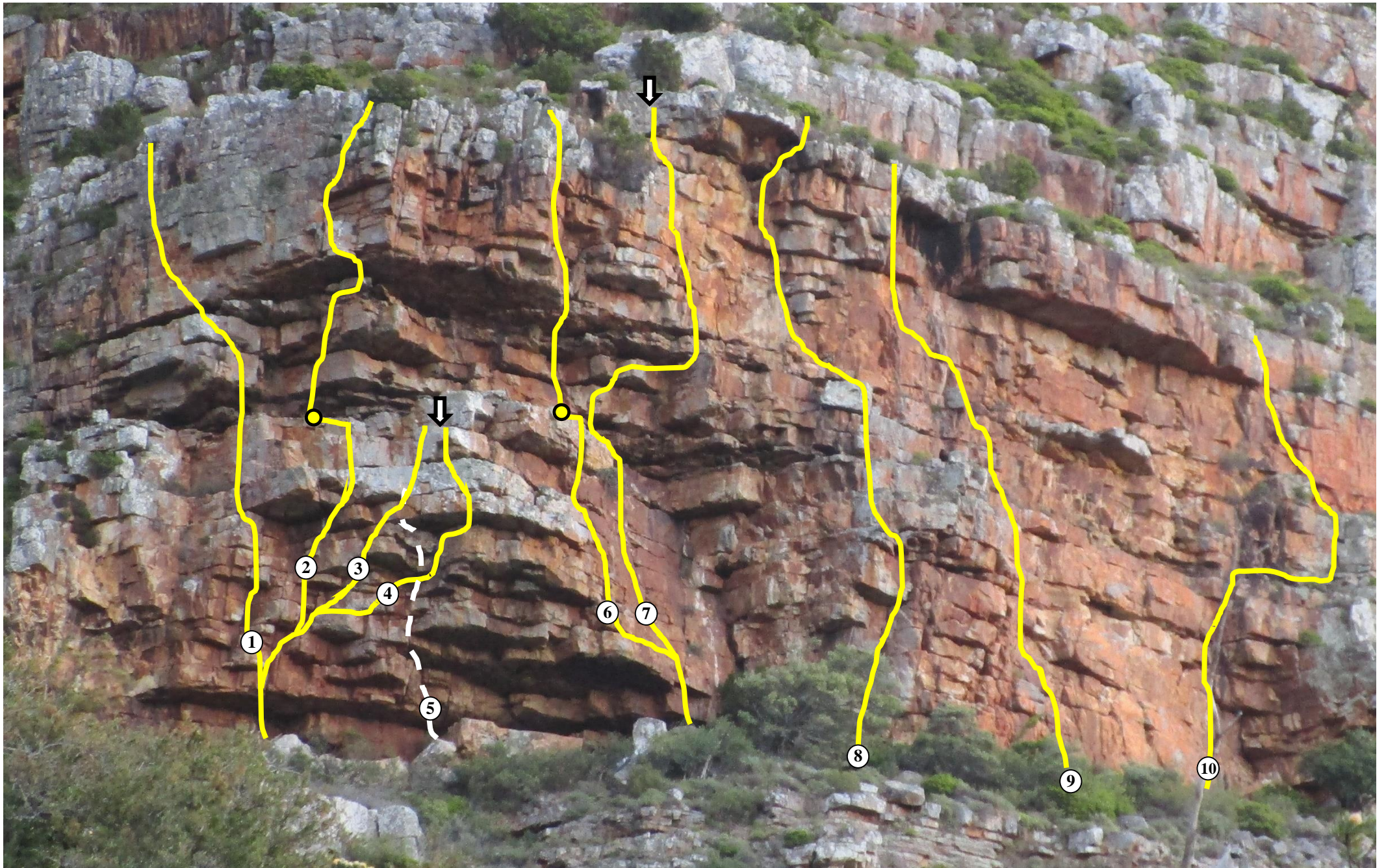
Approach

Park at Theresa avenue. Follow the concrete road up and take the first left fork. Continue up a short while and take a path to the right up to the pipe track (marked with a cairn). Walk left along the pipe track for a few minutes passing a rectangular metal feature on the path. About 25 paces past this look for a cairn on the right (opposite a large felled tree) and head up the slope. The key is to find the river bed coming down from the 'crag' on the left of the big gully. Follow the river bed until just below the left 'crag'. There is a large boulder on the left, follow cairns on the right and traverse across the slope into the gully and up through the confetti bush to the Confetti Crag.

Decent

There are tat rap points above *Café Caprice* (for the cave routes) and *Ice Ice Baby* (for the top tier).





Mountain Bokkie, Winsonian, Café Caprice and Snow Leopard share the same start, from a boulder on the left of the cave that allows one to pull onto the wall via a burly move.

1. Mountain Bokkie (21) ***

Varied line to the top of the crag.

Head straight up and left into a small recess. Pull around this and up and left to the big ledge. Pull onto the upper tier and follow the line of least resistance up and left to the top.

R. Halsey & S. Nightingale (Jul 2018)

2. Winstonian (22) ***

Pitch 2 is improbable and exposed.

P1(22) Head up and right under the first small overlap, then straight up to a wide corner below the roof. Rail right and up to the ledge via a tricky move (right of the wedged block in the ceiling).

P2 (22) Pull onto the upper tier on the left side of a low overhang. Head up and right to the main roof. Pull through to a good hand rail, move left and pull up to the wall above, then easily up and right to the top.

R. Halsey & W. Gans (Jul 2018)

3. Café Caprice (23) *****

Great line, probably the best at the crag.

Head up and right under the first small overlap. Continue diagonally right to a jam crack through a small roof. Pull past two more rails and then right to exit onto the ledge.

S. Nightingale & R. Halsey (Jul 2018)

4. Snow Leopard (24) *****

Big brother to *Café Caprice*, wingspan will help for the final wild moves.

Head up and right under the first small overlap. Pull up and hand traverse right, then up and further right to a wide, bottomless corner. Pull up into this and hand rail right to a final long pull through the roof and up to the ledge.

R. Halsey (Aug 2018)

5. Tarsier and Tourettes (23) ****

Steep route out of the centre of the cave.

Starts on a boulder in the middle of the cave. Pull up and move left until able to head straight up to the roof. Traverse left and finish up *Café Caprice*.

R. Halsey (Aug 2018)

6. Haemoglo Moon (22) ***

Second pitch is excellent!

P1(15) From a block, head up and left across the slab to a mantle onto the ledge.

P2 (22) Pull up and left to good holds through the roof (will feel much harder than 22 if you don't find the sneaky beta). Head diagonally left across the expose face to the top.

R. Halsey & W. Gans (Jul 2018)

7. Ice Ice Baby (17) ***

Best of the easier routes, good position.

From the block, head straight up the slab to the ledge (sandy in places, but avoidable). Pull up to a high, wide rail and traverse right until able to gain the orange face. Continue up and left to the top (in situ rap point)

R. Halsey & S. Nightingale (Jul 2018)

8. Rowan's Route (18) **

Nice climbing but wanders a bit

To the right of the slab is some scrappy rock. Start right of this and up to narrow overlap. Pull through on the right then move back left and up to easier terrain. Continue heading left, following a vague, steep recess until able to exit right at the top.

S. Nightingale & R. Halsey (Jul 2018)

9. Coleonema (18)**

Good climbing, pity about the loose block and bushy mantle at the end....

Start up the wall at a point where a paint path leads through the bushes and out to the right side of the crag. Head up and tend left under the broken rock and up to the midway ledge. Climb up below the black water-streak corner for 2m and then rail left 2m and up to the exit face will a series of horizontal rails. Beware a big loose block just right of the final face. The top out involves negotiating none non friendly climbers friend.

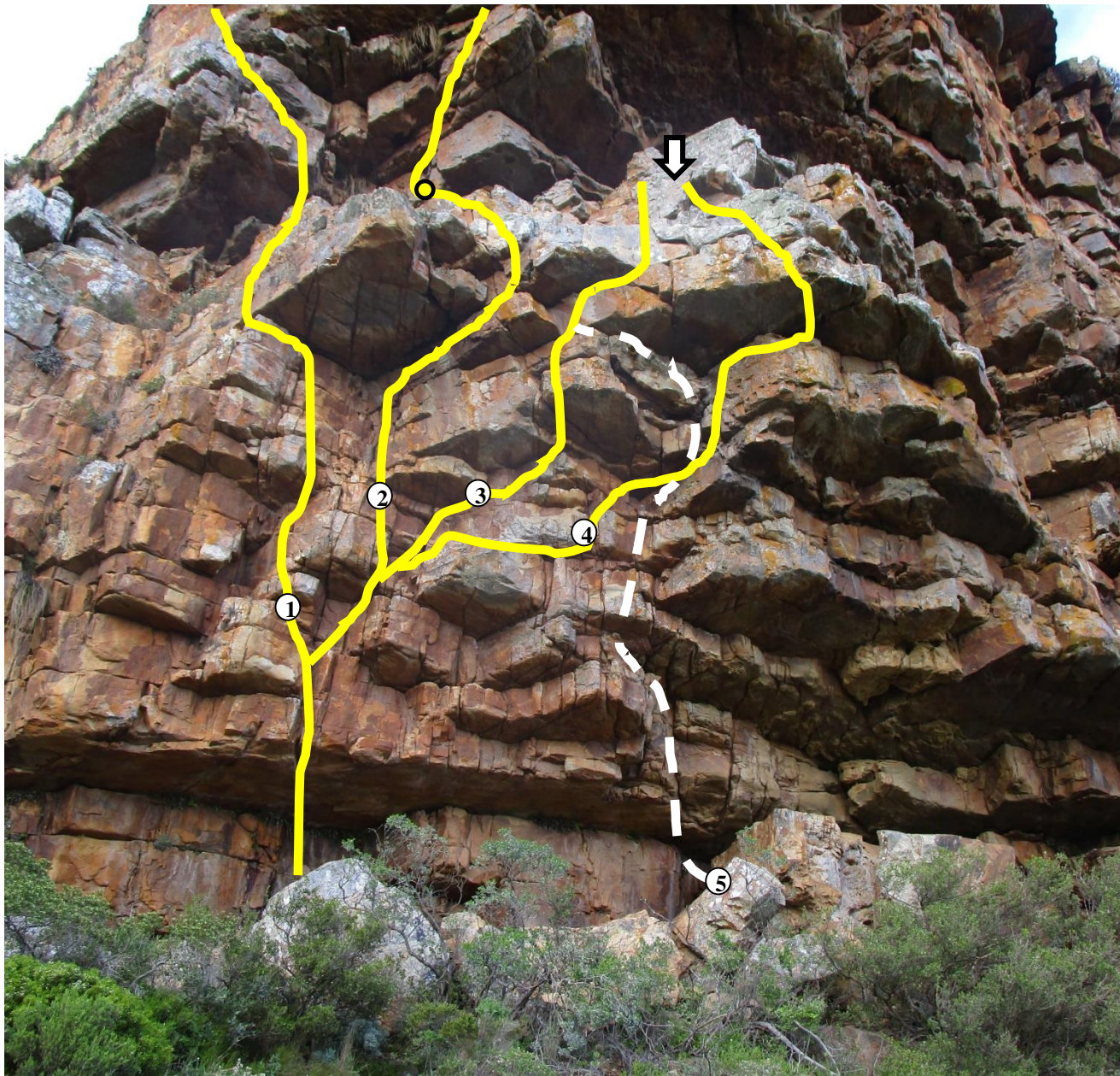
R. Halsey & F. Walters (Sept 2018)

10. Briefie Master (18) **

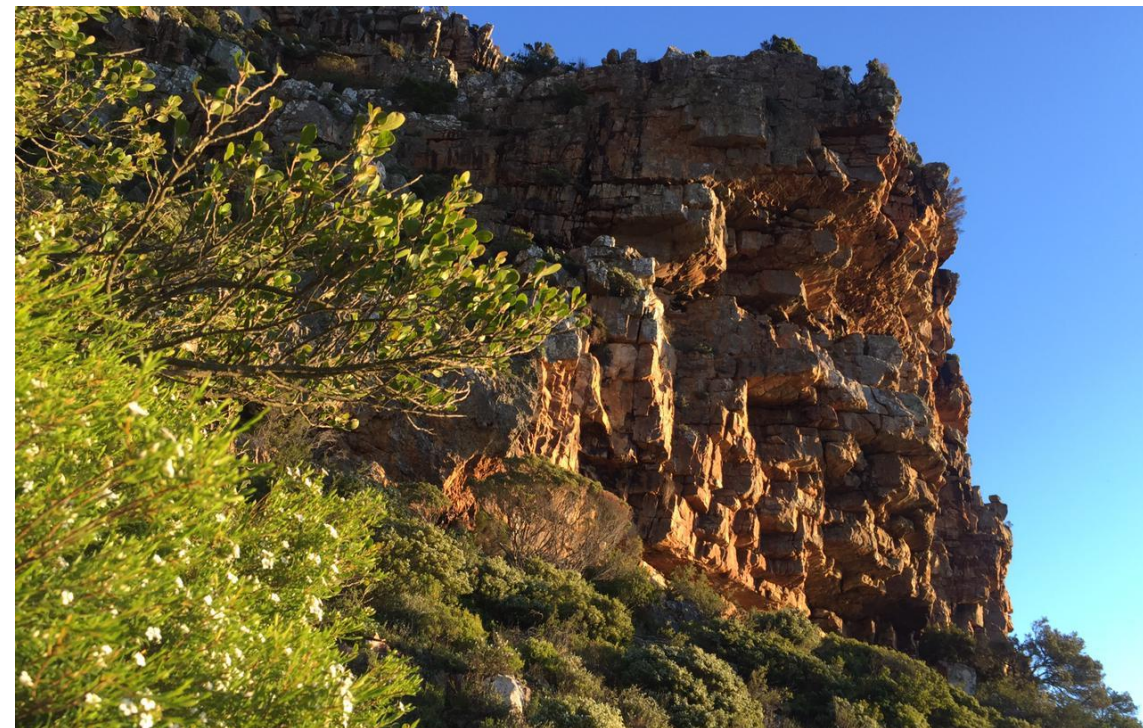
Nice climbing up to midway, then a walk and tricky finish.

Start on the far right of the wall. Climb up to where a short traverse right leads up to the ledge. Walk right a few meters and then climb diagonally back up and left to a tricky exit at the top.

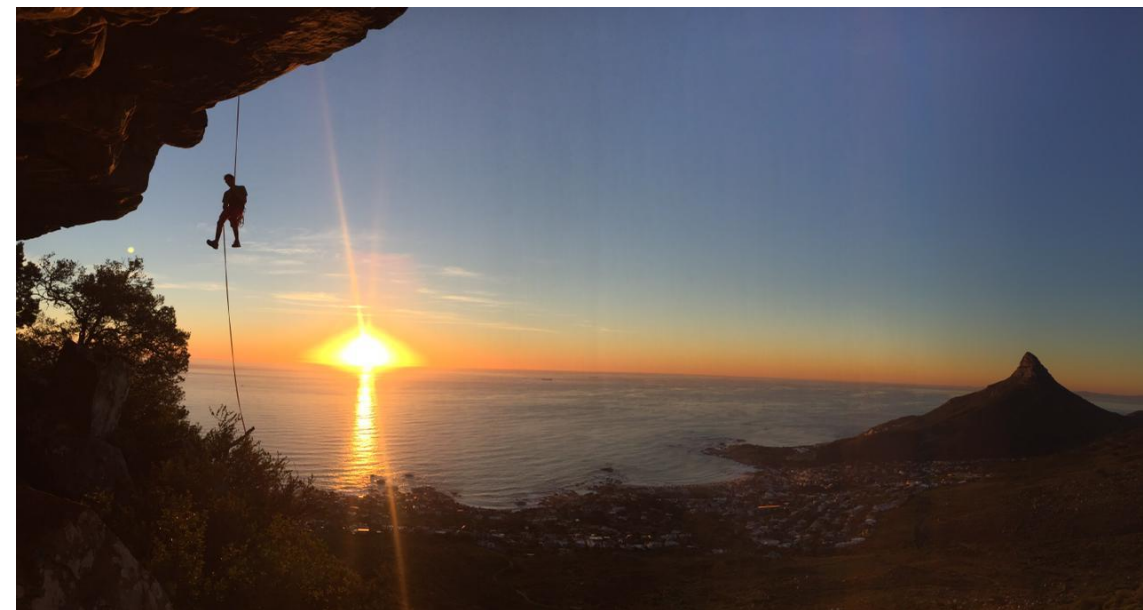
R. Halsey & F. Walters (Aug 2018)



Cave routes: full pump value!



Confetti bush and crag at sunset. Photos: F. Walters





Sam Nightingale on *Café Caprice* (23). Photo: R. Halsey



Checking out where Tarsier and Tourettes goes. Photo: F. Walters